



INSTALLATION INSTRUCTIONS
PART#:9B040001A1SS\9B040001A1A
SIDE BAR FOR 99-08 FORD F250 / F350 SUPER CREW

TEL ☐ 1-866-XANATOS

PARTS LIST:

1	Passenger Side Bar	8	10mm Clip Nuts
1	Driver Side Bar	16	10-1.50mm x 40mm Hex Head Bolts
4	Mounting Brackets	24	10mm Flat Washers
4	1/2"-13*2" Hex Head Bolts	16	10mm Lock Washers
4	1/2" Lock Washers	8	10mm Hex Nuts
4	1/2" Flat Washers		

PROCEDURE:

- 1. REMOVE CONTENTS FROM BOX. VERIFY ALL PARTS ARE PRESENT. READ INSTRUCTIONS CAREFULLY.**
2. Locate the driver side front and rear mounting points under the vehicle on the pinch weld.
3. Install the 10mm Clip Nuts (*Figure 1*). **NOTE:** The rear mount will required (2) Clip Nuts and the front only (1).
4. Loosely attach the Driver Side Brackets to pinch weld using the included (2) 10-1.50mm x 40mm Hex Head Bolts, (4) 10mm Flat Washers, and (2) 10mm Lock Washers (2 & 3)).
NOTE: *Pinch weld and side panel holes on the bracket must be Horizontal when installing.*
5. Loosely attach the upper side of the Mounting Brackets to already installed Clip Nuts by using (2) 10-1.50mm x 40mm Hex Head Bolts, (2) 10mm Flat Washers, and 10mm Lock Washers on each Mounting Bracket (*Figure 2 & 3*)..
6. Place Side Bar into position and loosely attach it to Mounting Brackets using the included (2) 1/2"Hex Head Bolts, (2) 1/2" Flat Washers, and (2) 1/2" Lock Washers (*Figure 4 & 5*). **NOTE:** *Side Bar mounting hole on the brackets must be vertical.*
7. Level and align Side Bar with the side of the vehicle then tighten all hardware at this time.
8. Repeat steps 2 to 7 for passenger side.
9. Periodically check and retighten the hardware as necessary.

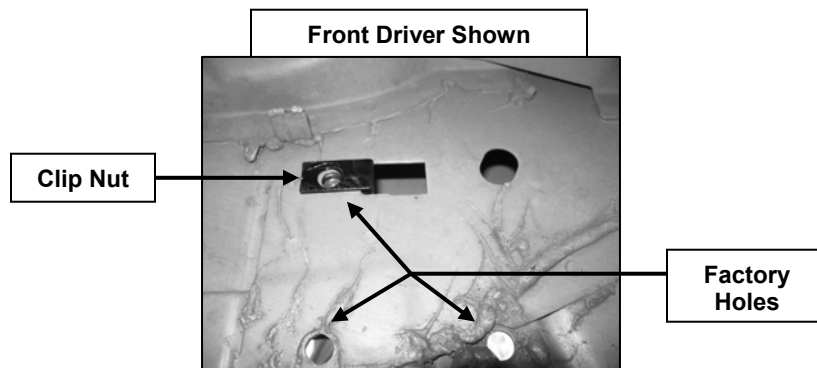
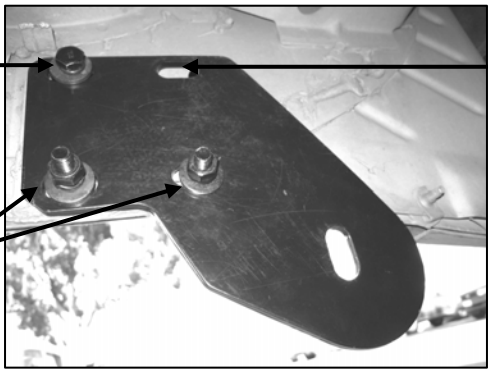


Figure 1

Front Driver Side Bracket Shown

Clip Nut, 10mm x 40mm Hex Bolt, 10mm Lock Washer, & 10mm Flat Washer

10mm x 40mm Hex Bolt, 10mm Lock Washer, 10mm Flat Washer, 10mm Nut

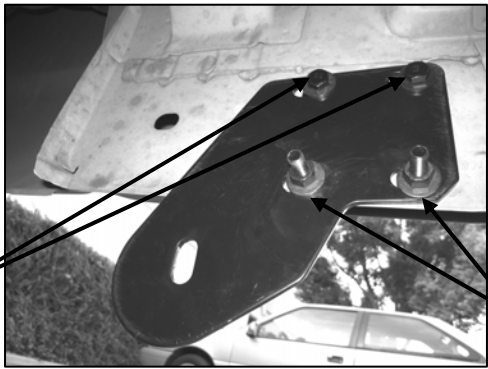


Disregard hole

Figure 2

Rear Driver Side Bracket Shown

Clip Nut, 10mm x 40mm Hex Bolt, 10mm Lock Washer, & 10mm Flat Washer



10mm x 40mm Hex Bolt, 10mm Lock Washer, 10mm Flat Washer, 10mm Nut

Figure 3

Rear Driver Side Bracket Shown

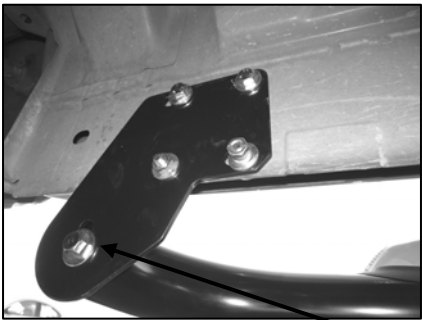
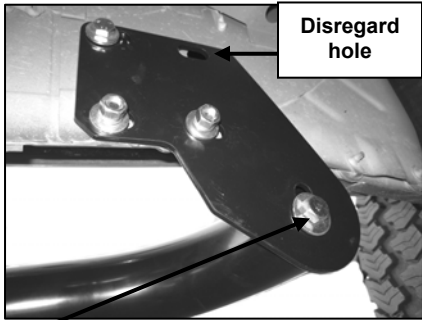


Figure 4

1/2"*2" Hex Bolt, 1/2" Lock Washer, & 1/2" Flat Washer

Front Driver Side Bracket Shown



Disregard hole

Figure 5